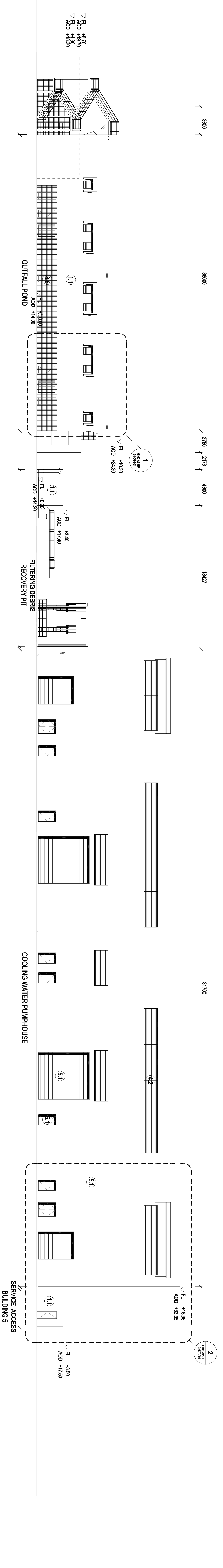


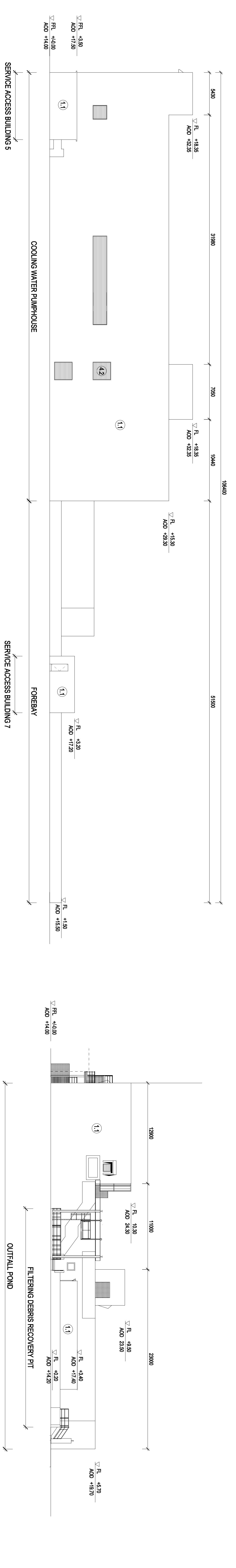
All internal layouts and uses are shown for illustrative purposes only and are not for determination

NOTES:

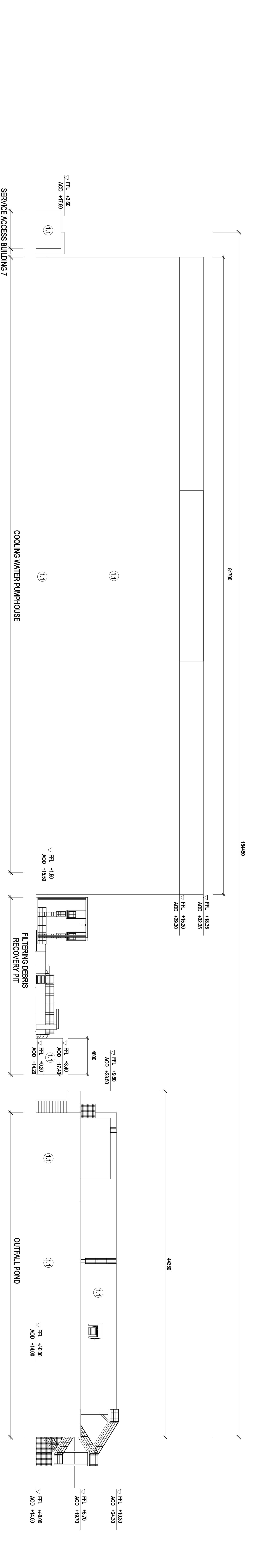
- 1. Concrete / render finishes
- 2. Pre-cast concrete
- 3. Render finish
- 4. Access gills
- 5.1 Metal door
- 5.2 Glass door
- 5.3 Glazed door
- 5.4 Access gills
- 6. Window / network accessions
- 6.1 Aluminum frame
- 6.2 Glass pane
- 6.3 Glazed balustrade
- 6.4 Metal stairs and balustrade
- 7. Glazing / translucent materials
- 7.1 Roofing
- 7.2 Ballast
- 7.3 Standing seam roof
- 7.4 Polycarbonate translucent cladding
- 7.5 Frenched glazing
- 7.6 Frenched glazing
- 7.7 Polycarbonate translucent cladding
- 8. External wall features
- 8.1 Aluminum trims, coverings and casings
- 8.2 Floor vents and balustrade
- 8.3 Glass louvers
- 8.4 Aluminum bi-fold door
- 8.5 Flat roof
- 8.6 Mesh expanded metal panels
- 8.7 Retractable steel shutters
- 8.8 Steel grid
- 8.9 Removable pipe and trough
- 9. Building Accessories
- 9.1 Aluminum trims, coverings and casings
- 9.2 Floor vents and balustrade
- 9.3 Glass louvers
- 9.4 Aluminum bi-fold door
- 9.5 Flat roof
- 9.6 Mesh expanded metal panels
- 9.7 Retractable steel shutters
- 9.8 Steel grid
- 9.9 Removable pipe and trough



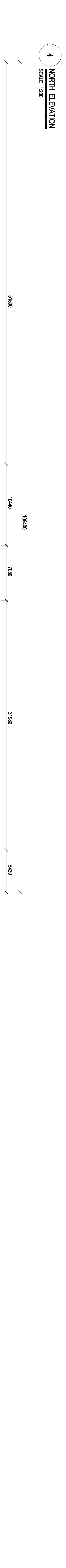
1 SOUTH ELEVATION
SCALE 1:200



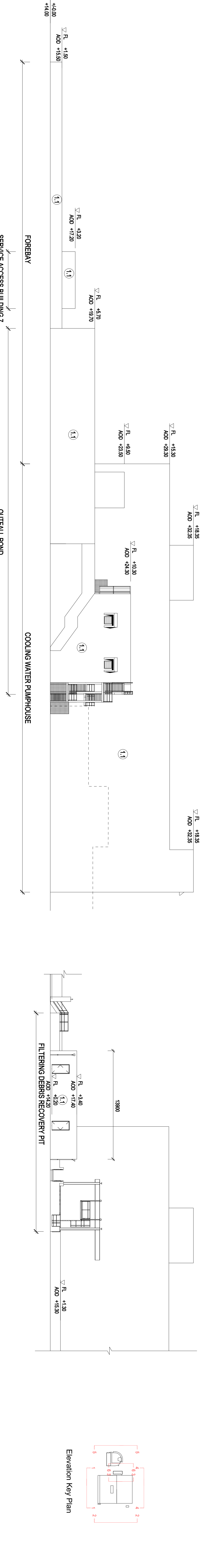
2 EAST ELEVATION FOR HOB
SCALE 1:200



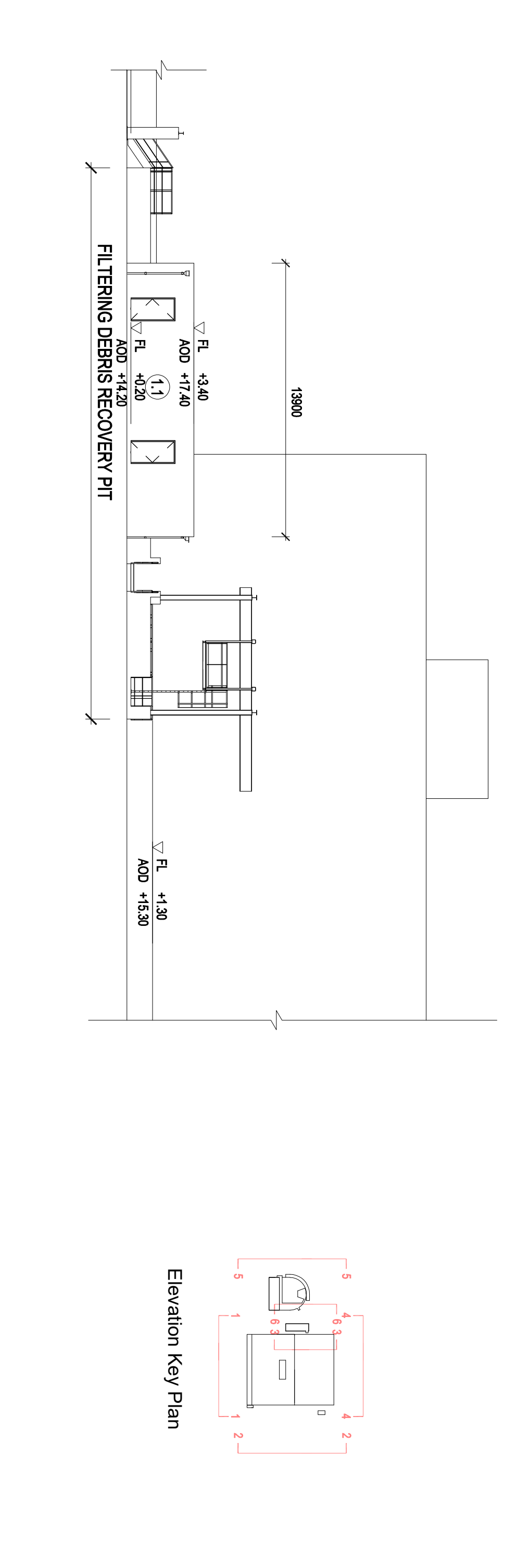
3 EAST ELEVATION FOR HOB
SCALE 1:200



4 NORTH ELEVATION
SCALE 1:200



5 WEST ELEVATION
SCALE 1:200



6 WEST ELEVATION FOR HOB
SCALE 1:200



HINKLEY POINT C

DRAWING TITLE
Hinkley Point C Development Site
Unit 1: Cooling Water Pumphouse / Forebay / Outfall Pond
/ Service Access Buildings 5 and 7
Elevations 5(2)(i)
Regulation 5(2)(i)
PROJECT REFERENCE NO.
HINK-A2-HP-01-GE-001

NO.	DATE	BY	CHK.	DESCRIPTION	SCALE	DATE
04	1:200	@0	JUN	2020		

DOO Change Application Drawing - Detail (for Approval)
SCALE: 1:200
0 1 2 3 4 5 6 7 8 9 10
METERS
PROTECTIVE MARKING REQUIRED
NOT PROTECTIVELY MARKED